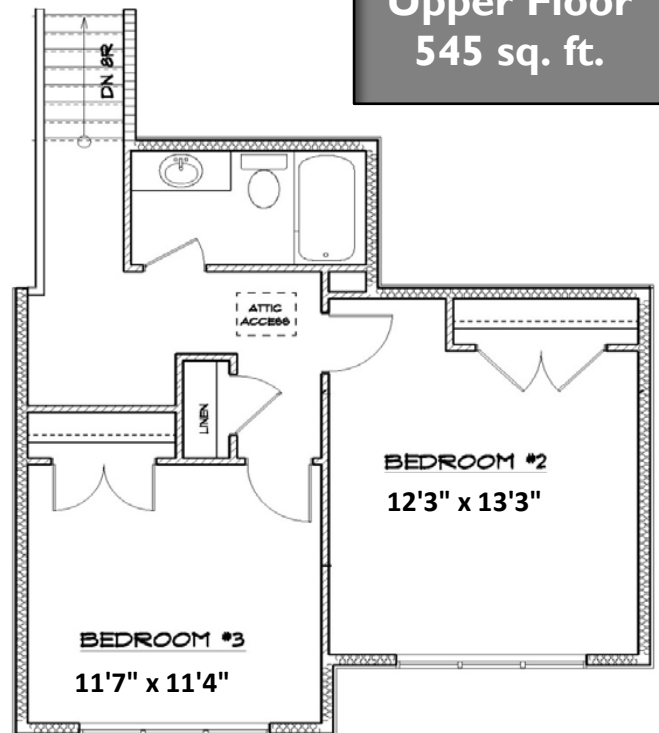


Job 1572: 15601-107A St. Westlake
1,761 sq. ft.
Modified Bi-level

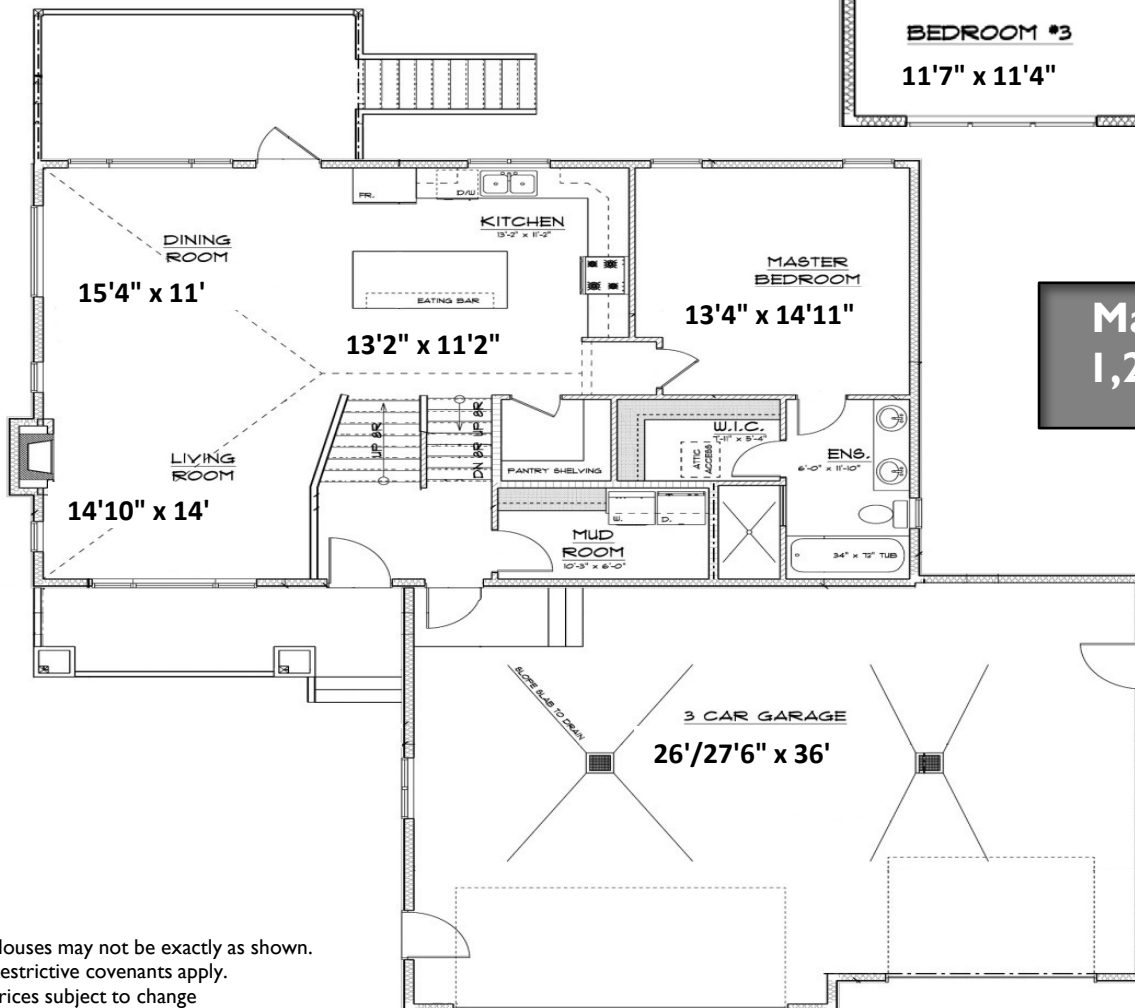
FEATURES:

- Custom maple cabinets w/ granite & quartz throughout
- Master on main floor
- Large walk-in shower & jetted tub in Ensuite
- Mudroom & Laundry off foyer
- Hardwood - Main living area, Stairs from foyer
- Tile - Foyer, Mud Room, and Bathrooms
- 10' x 16' Covered deck
- Space for RV parking pad and 30 amp plug

Upper Floor
545 sq. ft.

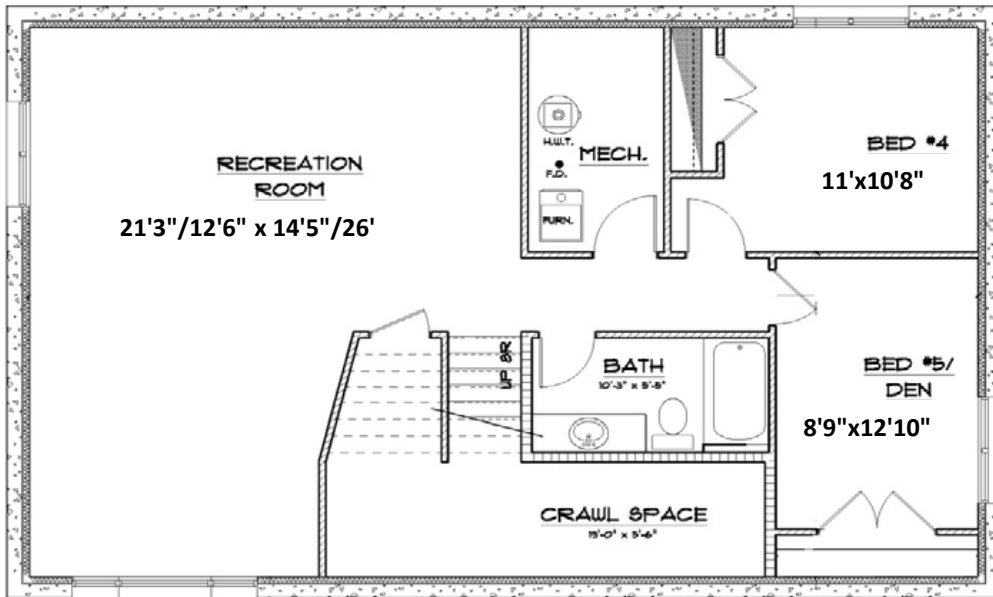


Main Floor
1,216 sq. ft.



Houses may not be exactly as shown.
Restrictive covenants apply.
Prices subject to change





**Basement
(Not developed)
968 sq. ft.**



Over 25 years of Custom Home building experience.

We promise quality, transparency and exceptional personal service.

**Contact us today for a quote:
Ph: 780-538-4026
Email: info@monarchhomes.ca**

