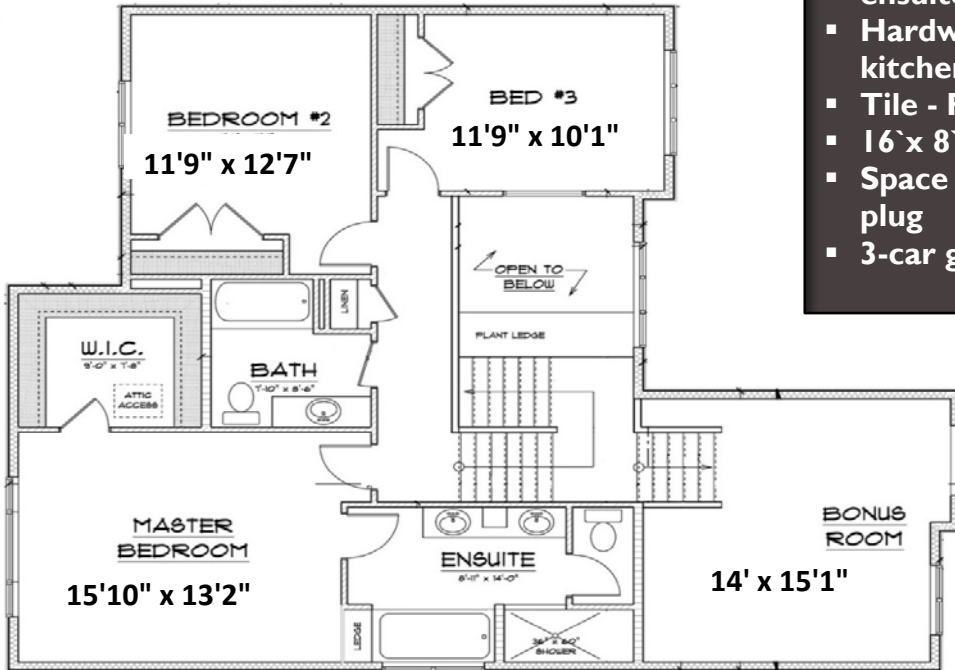


**Job 1569: 10702-156 Ave. Westlake
2,296 sq. ft.**

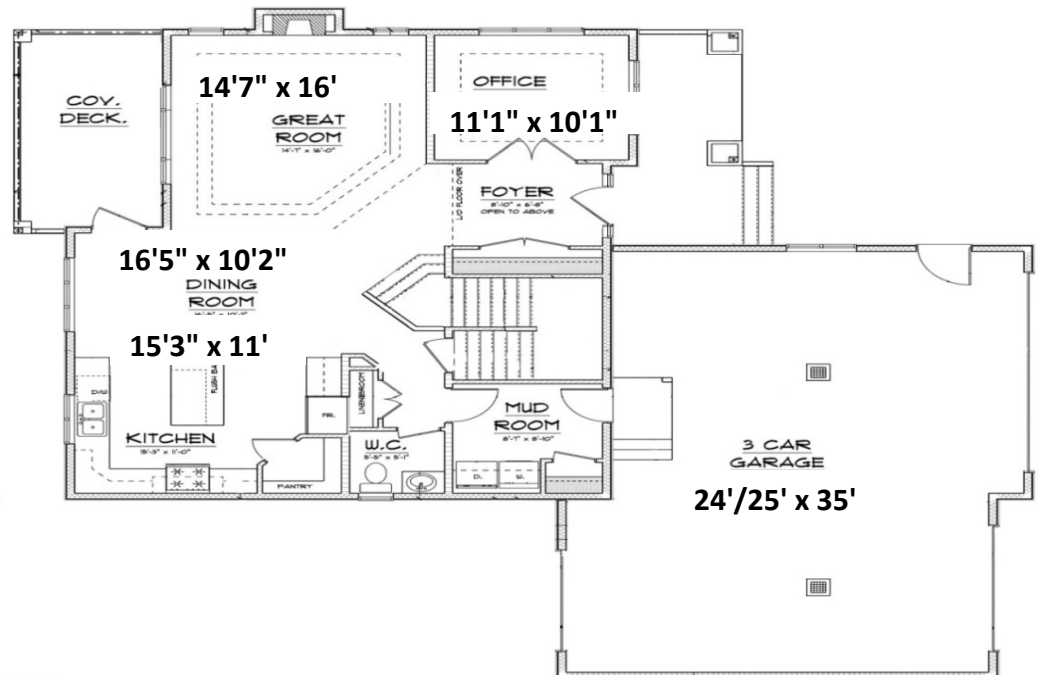
FEATURES:

- Custom maple cabinets w/ granite throughout
- Den/Office on main floor
- Laundry on main floor
- Bonus Room on upper floor
- Large master w/ beautiful 5-piece ensuite
- Hardwood - office, great room, kitchen, dining
- Tile - Foyer, Laundry, and Bathrooms
- 16' x 8'6" Covered deck
- Space for RV parking pad and 30 amp plug
- 3-car garage: 24'/25' x 35'



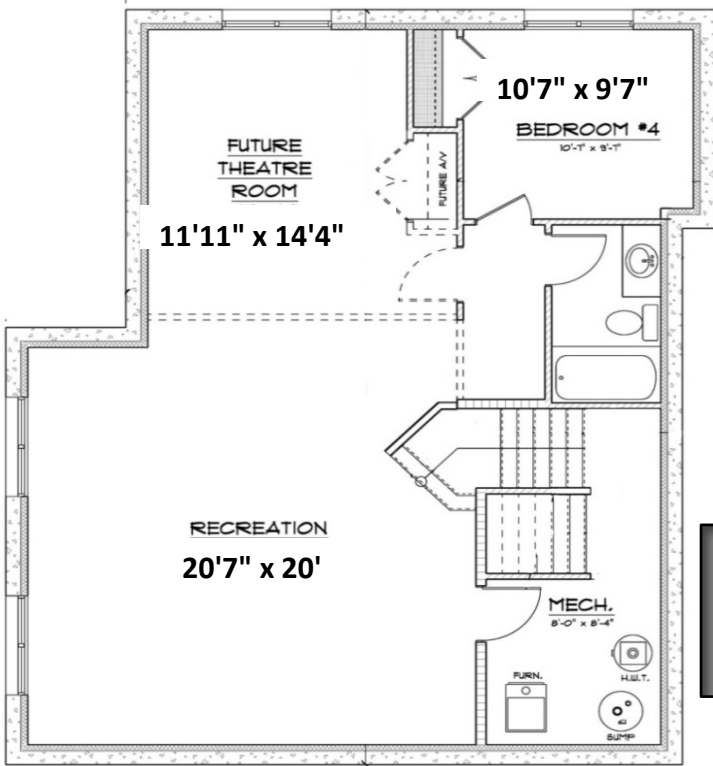
**Upper Floor
1,181 sq. ft.**

**Main Floor
1,115 sq. ft.**

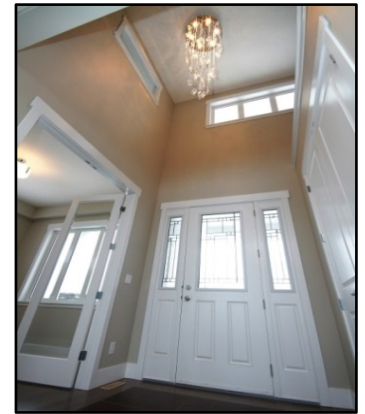


Houses may not be exactly as shown.
Restrictive covenants apply.
Prices subject to change





**Fully-developed
Basement
1,015 sq. ft.**



Over 25 years of Custom Home building experience.

We promise quality, transparency and exceptional personal service.

**Contact us today for a quote:
Ph: 780-538-4026
Email: info@monarchhomes.ca**